



Belgium for  
Biodiversity

# Kick-off - Workshop

Natagriwal asbl





LIFE B4B - Belgium for Biodiversity

Kick-off - Workshop « Nature inclusive agriculture »

## Walloon agroenvironmental context

October 11, 2023

Kathleen Mercken



Belgium for  
Biodiversity

## A few figures



**12 728 farms**

**740 623 ha**

(44% of the surface of Wallonia)

Average area per farm: **58 ha**

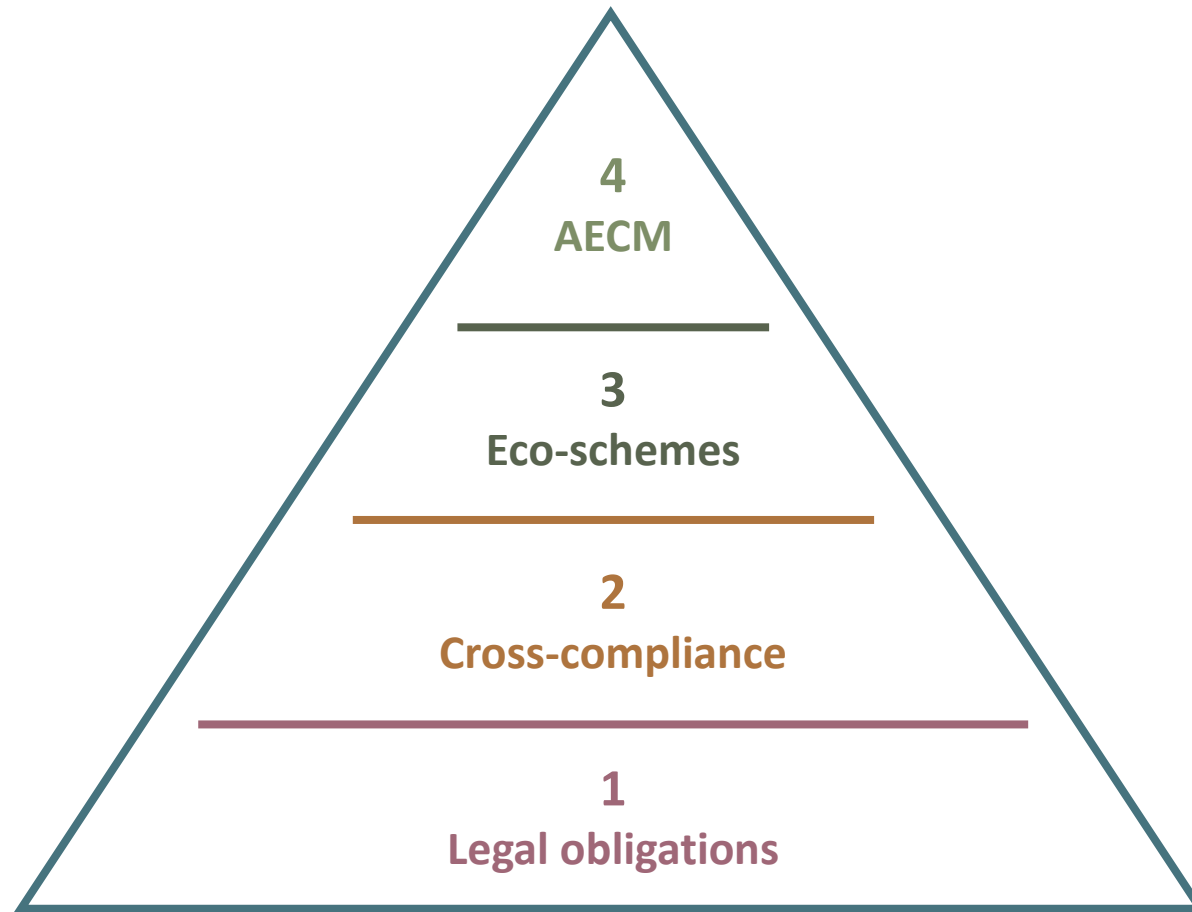


**21 947 regular workers**

**55 years old average**



# Relations between agriculture and environment in the CAP



4



3



2



1



# Legal obligation

Laws, must be respected by every farmer, even who do not wish to receive CAP subsidies.

## Examples:

- Fencing of watercourses for livestock
- Permanent plant cover along waterways
- Ban on pouring pesticides into rivers



# Cross compliance

Condition for obtaining income from the CAP.  
Penalty on subsidies in case of non-compliance.

## Examples:

- Crop rotation on arable land
- Minimum share of arable land devoted to non-productive areas and elements
- Minimum ground cover to avoid bare ground in the most sensitive periods



# Eco-schemes

**Annual voluntary commitment** to adopt more environmentally friendly practices.

A payment is granted each year depending on the level of adoption of the specifications.

There are 5 eco-schemes in Wallonia:

- Long ground cover
- Environmentally friendly crops
- Ecological network
- Reduction of inputs
- Maintenance of grasslands and reduction of livestock stocking



# Agro-environmental and climatic measures

**5-year commitment** to adopt more environmentally friendly practices.  
Payment each year if the specifications are respected.

- Endangered local breed animals
- Ecological strips/plots in crops
- Grassland with high biological value
- Natural grassland
- Headlands, field margins
- Standing cereals
- Fodder autonomy
- Agro-environmental action plan at farm scale





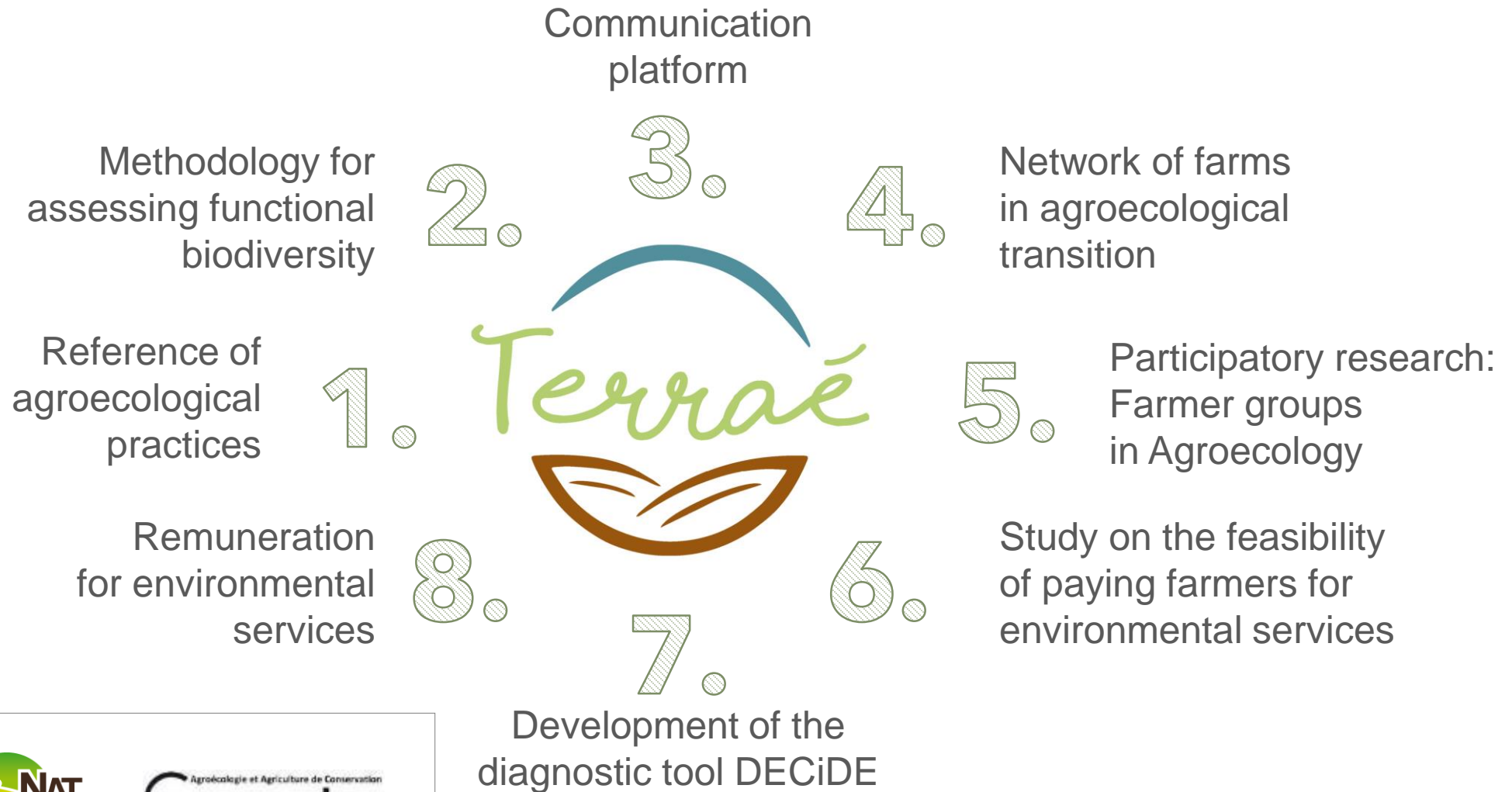
# Agro-environmental and climatic measures

**Common measure:** via the CAP declaration

**Specific measure:** via an AECM adviser from Natagriwal



# TERRAE - A support plan for agroecology



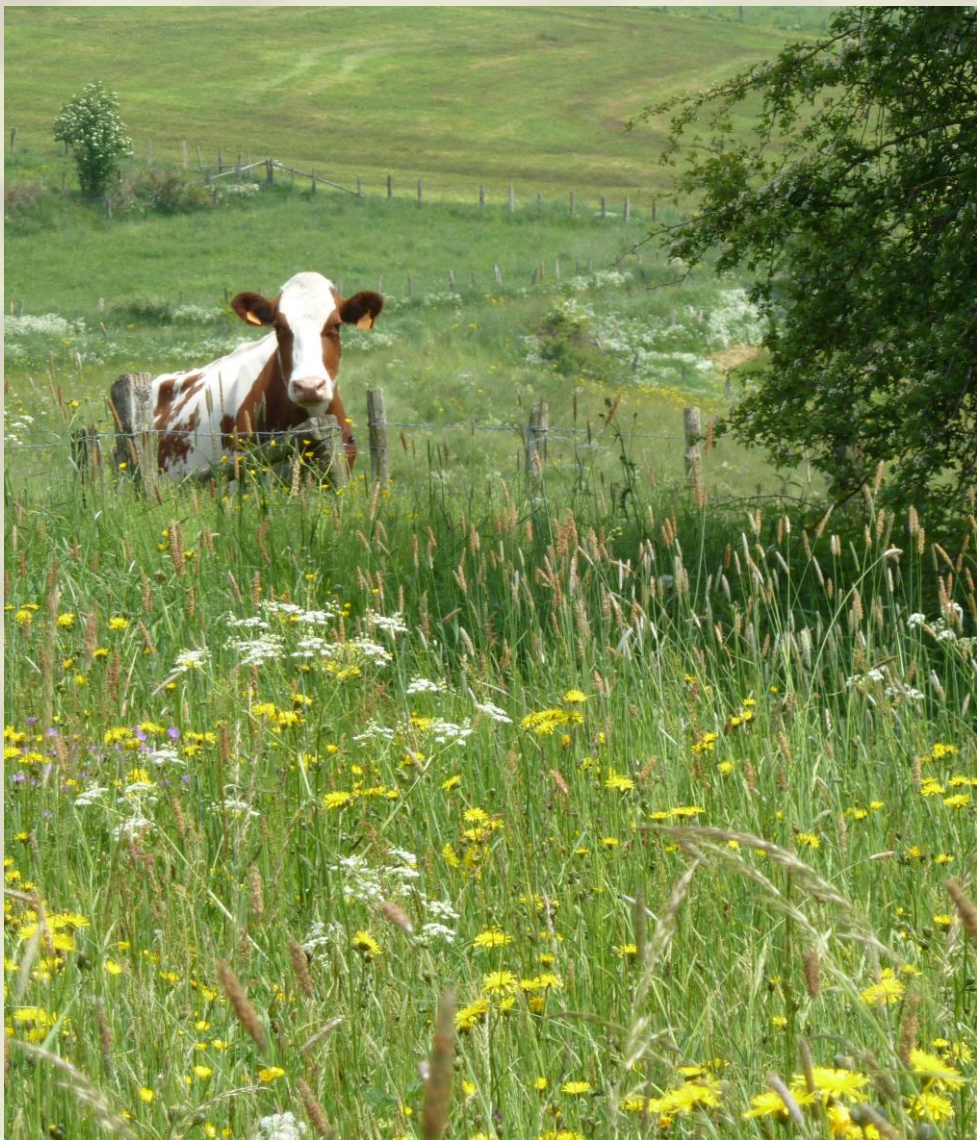


Any question?

[www.natagriwal.be](http://www.natagriwal.be)

[kmercken@natagriwal.be](mailto:kmercken@natagriwal.be)





**Thanks !**

**Dank u !**

**Merci !**



Belgium for  
Biodiversity