

LIFE IP NATUREMAN



The farmer as a manager of nature



Jørgen Bidstrup
Project manager
Danish Nature Agency
JOBID@NST.DK

Main Objective:

- Support and consolidate Danish efforts to achieve favourable conservation status for habitats and species – especially the habitat types petrifying springs, alkaline fens and grasslands, in 11 Natura 2000 areas.

Strategy:

- The farmer as a manager of nature
 - Make nature management a viable, highly specialized branch of farming
- Holistic planning in river valleys which utilize the synergies between the Habitats Directive, Water Framework Directive, Climate Strategy and rural development. Includes socio-economic factors in monitoring



LIFE NATUREMAN – The Farmer as a Manager of Nature (DK) – Speaker Jørgen BIDSTRUP

- Holistic planning in Natureman
- Creating synergy in projects
- Stakeholder engagement in Natureman
- Collaborating with farmers and agricultural consultants



Why strive for synergies?

- Many simultaneous demands and wishes for a limited area.
- We must think in contexts and solve several challenges at the same time.
- The world is multifunctional and we must think in multifunctional solutions.
- Multifunctional solutions are cost-effective solutions



Holistic planning in Natureman

How do we ensure synergy between different plan and projects ?

How do we involve stakeholders in the best possible way?

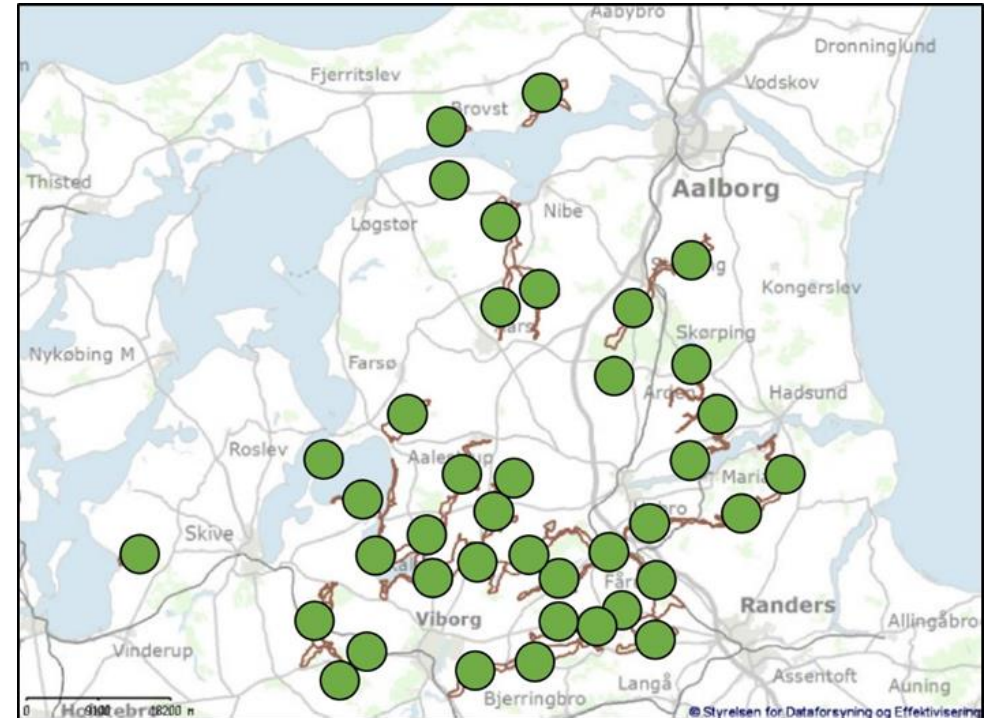
How do we create the best imaginable basis for a cost-effective implementation of concrete actions in Natureman?

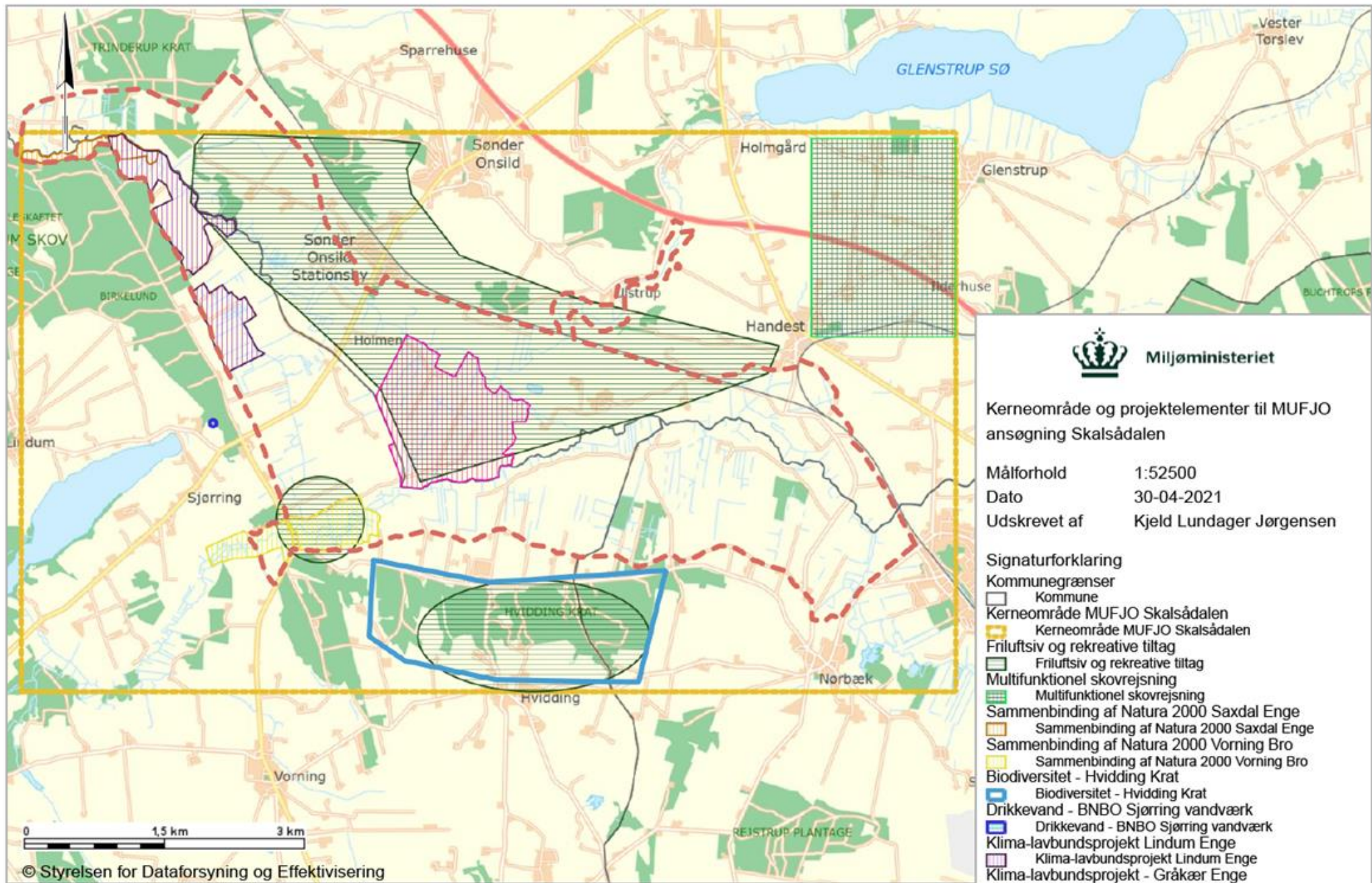


Strategy for holistic planning in Natureman

39 subregional holistic plan covering approximately 30.000 ha.

- 1: Overall vision for the subregion (Municipal level)
- 2: Involvement of landowners, citizens and stakeholders in the subregion. What are the challenges and opportunities in the area? Common vision for the area.
- 3: Catalog of potential projects in the subregion.
- 4: Budget and deliverables in the subregion.
- 5: Concrete implementation of C-actions.
- 6: Final report at the end of 2027 - what did we accomplish?





Miljøministeriet

Kerneområde og projektelementer til MUFJO ansøgning Skalsådal

Målforshold 1:52500
 Dato 30-04-2021
 Udskrevet af Kjeld Lundager Jørgensen

- Signaturforklaring**
- Kommune
 - Kerneområde MUFJO Skalsådal
 - Kerneområde MUFJO Skalsådal
 - Fritids- og rekreative tiltag
 - Fritids- og rekreative tiltag
 - Multifunktionel skovrejsning
 - Multifunktionel skovrejsning
 - Sammenbinding af Natura 2000 Saxdal Enge
 - Sammenbinding af Natura 2000 Vorning Bro
 - Sammenbinding af Natura 2000 Vorning Bro
 - Biodiversitet - Hvidding Krat
 - Biodiversitet - Hvidding Krat
 - Drikkevand - BNBO Sjørring vandværk
 - Drikkevand - BNBO Sjørring vandværk
 - Klima-lavbundsprojekt Lindum Enge
 - Klima-lavbundsprojekt Lindum Enge
 - Klima-lavbundsprojekt - Gråkær Enge
 - Klima-lavbundsprojekt - Gråkær Enge
 - LIFE IP indsatsområde Sdr. Onsild Enge
 - LIFE IP indsatsområde Sdr. Onsild Enge

© Styrelsen for Dataforsyning og Effektivisering

Ortofoto fra COWI
 COWI har den fulde ophavsret til Sommer ortofotos (DDO®land). Det er kun tilladt at tage kopier eller udprinte ortofotos (DDO®land) til dit eget private brug indenfor husstanden, eller hvis din institution har købt brugsrettigheder hos COWI. Øvrig kommerciel anvendelse er ikke tilladt og vil kunne retsforfølges.

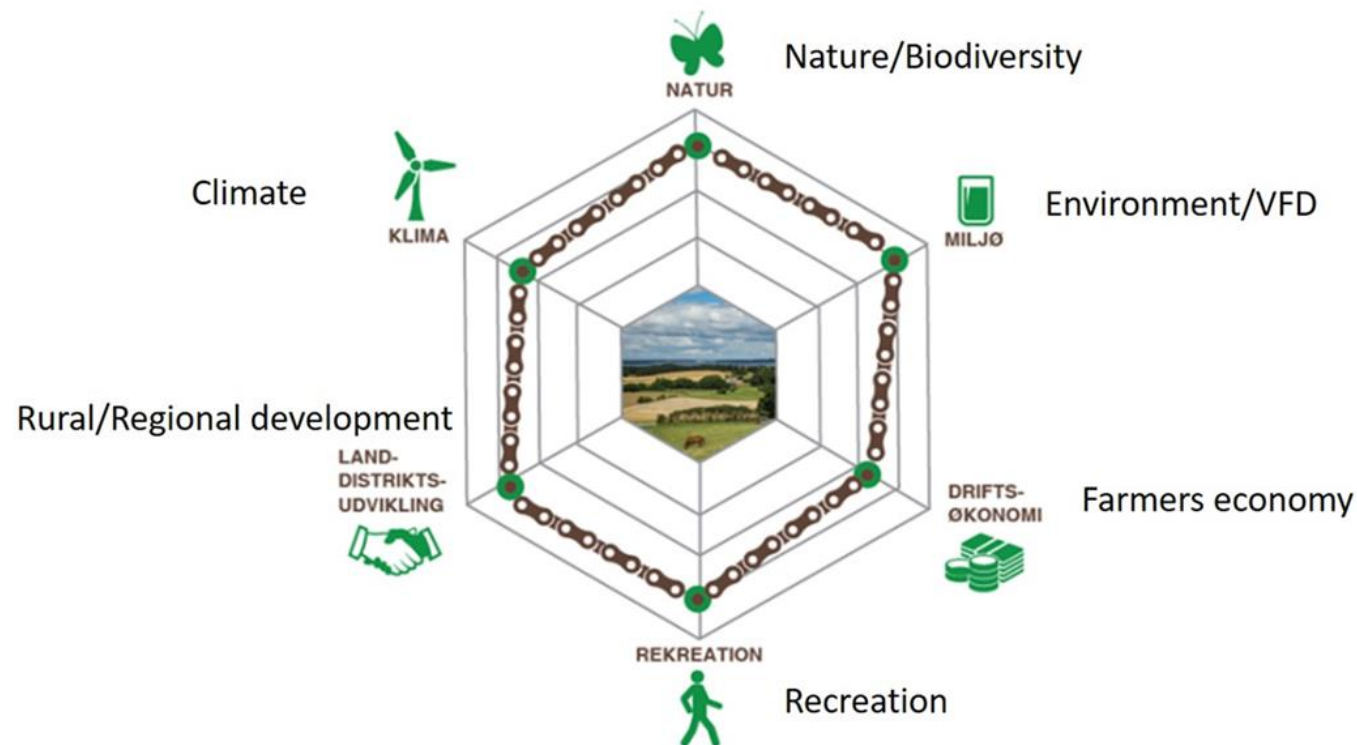
LIFE NATUREMAN – The Farmer as a Manager of Nature (DK) – Speaker Jørgen BIDSTRUP

- Holistic planning in Natureman
- Creating synergy in projects



Creating synergy in projects?

- Many projects in one area are not a guarantee of synergy
- Plans that do not collide are not an expression of synergy
- When plans meet, opportunities for synergy arise
- You don't get synergies for free!



Pia Heike Johansen, Lektor ph.d.,
Center for Landdistriktsforskning,
Syddansk Universitet

Søren Præstholt, Specialkonsulent, ph.d.
Videncenter for Friluftsliv
og Naturformidling, Skovskolen,
Københavns Universitet

Rasmus Ejrnæs, Seniorforsker, ph.d.
Institut for Bioscience,
Aarhus Universitet

Brian Kronvang, Professor,
Institut for Bioscience,
Aarhus Universitet

Jesper S. Schou, Lektor ph.d.,
Institut for Fødevarer- og Ressourceøkonomi,
Københavns Universitet


Jakob Vesterlund Olsen, Forsker ph.d.,
Institut for Fødevarer- og Ressourceøkonomi,
Københavns Universitet

Synergi og begrænsning imellem
25 effektmålepunkter for
multifunktionel jordfordeling

*Af Johansen, P.H., Kronvang, B., Præstholt,
S., Ejrnæs, R., Schou, J.S. og Olsen, J.V.*

Creating synergy in projects?

- There are no excuses not to look for synergies and multi-functionality
- It requires a change in mindset:

How does my project affect you  how can we jointly create a project that benefits both of us.

- It requires a showdown against pillar-divided administrations and organisations
- It is hard work and requires commitment and cooperation

LIFE NATUREMAN – The Farmer as a Manager of Nature (DK) – Speaker Jørgen BIDSTRUP

- Holistic planning in Natureman
- Creating synergy in projects
- Stakeholder engagement in Natureman



Stakeholder engagement in Natureman?

- No one size fits all
- Avoid expectations that are not met
- Decide from the start after careful consideration how stakeholders are involved

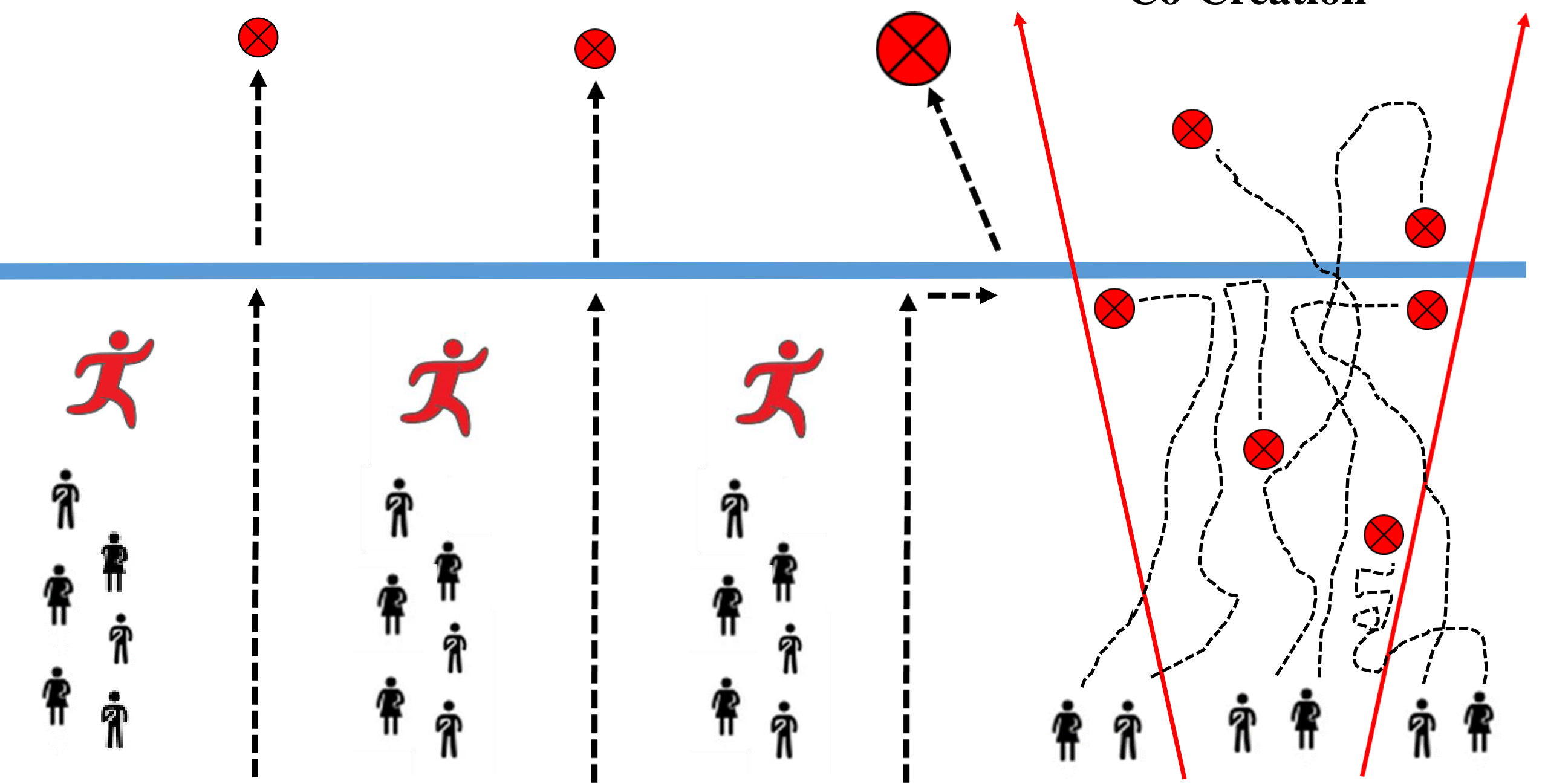


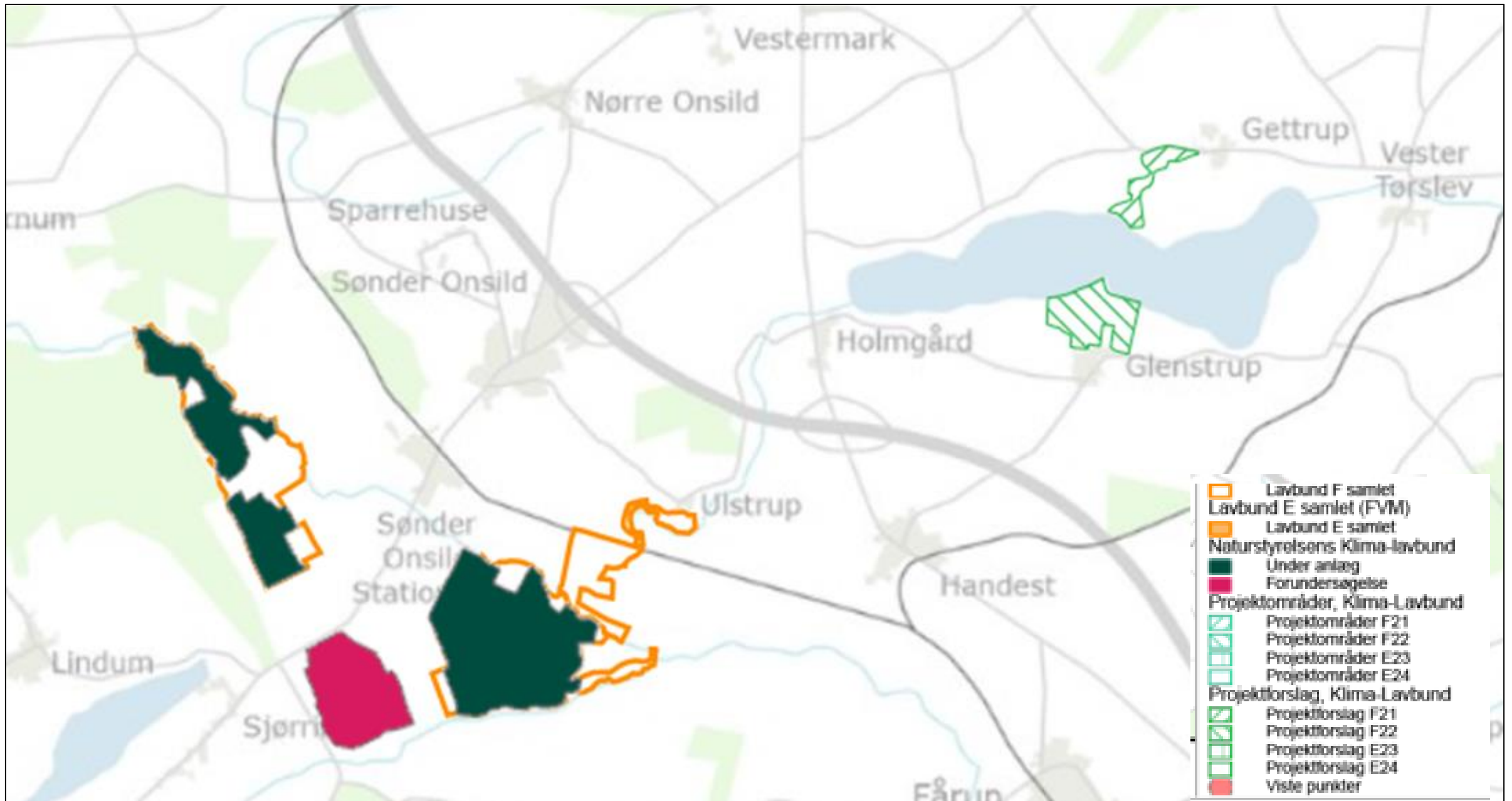
Instruction

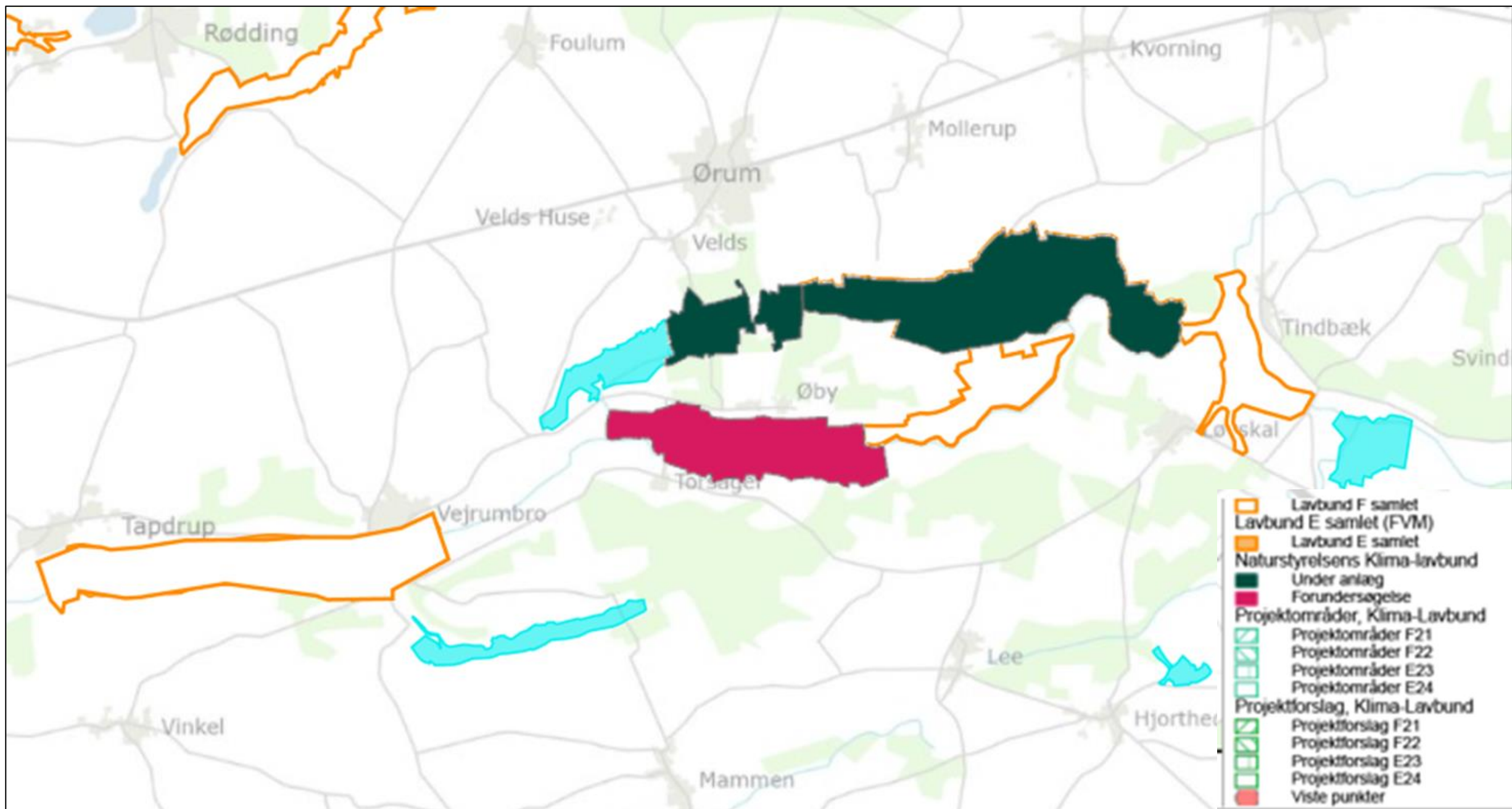
Information

Involvement

Co-Creation








Holistic planning in Natureman

- Vision: How will your area become an even better place to live, work and visit.
- The method does not work if you have to achieve a specific objective.
- Clear communication of roles and responsibilities
- Clear communication of objectives and resources
- Communication – communication - communication
- Avoid expectations that are not met





Conference for researchers and practitioners

CO-CREATING LANDSCAPE CHANGE IN THE GREEN TRANSITION

Storytelling, multispecies contestations,
and collaborative governance



SAVE THE DATE: 24-25 FEBRUARY 2025
www.anthropology.su.dk/dep/event/cic2025/

UNIVERSITY OF COPENHAGEN     VELUX FONDEN



LIFE NATUREMAN – The Farmer as a Manager of Nature (DK) – Speaker Jørgen BIDSTRUP

- Holistic planning in Natureman
- Creating synergy in projects
- Stakeholder engagement in Natureman
- Collaborating with farmers and agricultural consultants



Collaborating with farmers and agricultural consultants

- 80% of the nature areas are owned by farmers
- We have a very close collaboration with agricultural organizations and 6 local agricultural consultancy organisations.
- They did not want to be partners in the project because the self-financing
- We have legislation that allows us to offer free advice to farmers within the Natureman area
- Natureman has trained around 50 agricultural consultants who can provide free advice in the project area.
- The trained agricultural consultants is a part of our afterlife plan.



NATUREMAN actions

- Creating larger coherent nature areas.
- Capacity building and education
- Practical and economical support for fencing, gates etc.
- New technology (drones, GPS necklace, electronic ear tags, no-fence technology e.t.c)
- Rules and regulatory simplifications
- Branding and marketing of Nature Meat.
- Result-based top up scheme

Havesting meadow grasses for biogas production

2018 deficit of 870 euros per ha.

2023 profit of 366 euros per ha



Result-based top up scheme

Danish Agricultural Agency

Pilot-scheme in 2024:

10 applicants and 100 hectares

Criteria for the pilot:

- 5 years commitment scheme for grazing in Natura-2000 areas
- Situated in Natureman project area

Purpose:

- Is the farmer willing to register plant species?
- Is the farmer interested in learning more about biodiversity?
- Can we encourage better grazing for biodiversity?



Result-based top up scheme

How will it work?

May-july: The farmer must register and submit 3 kinds of indicators in the grazing areas to the Danish Agricultural Agency.

Indicators

- 1) Plant indicators (0-10 points)
- 2) Density of structural indicators (0-50 points)
- 3) Grazing indicators (0-70 points).

5 years commitment scheme for grazing in Natura-2000 areas: 348 euro/ha/year

Result-based top up scheme:

	Indicator 1+2	Indicator 3	Sum	euro/ha/year
Level 1	Min 25 points	Min 20 points	45 points	134
Level 2	Min 45 points	Min 45 points	90 points	268



Result-based top up scheme

1) Plant indicators (0-10 points)



2) Density of structural indicators (0-50 point)



3) Grazing indicators:
Time of year and density (0-45 point)
Animal combination (0-25 points)



Result-based top up scheme

Farmer manuals

Part 1:
Grazing for biodiversity

Part 2:
Plant indicators

