



Workshop 1: governance

Nature Connectivity in Belgium

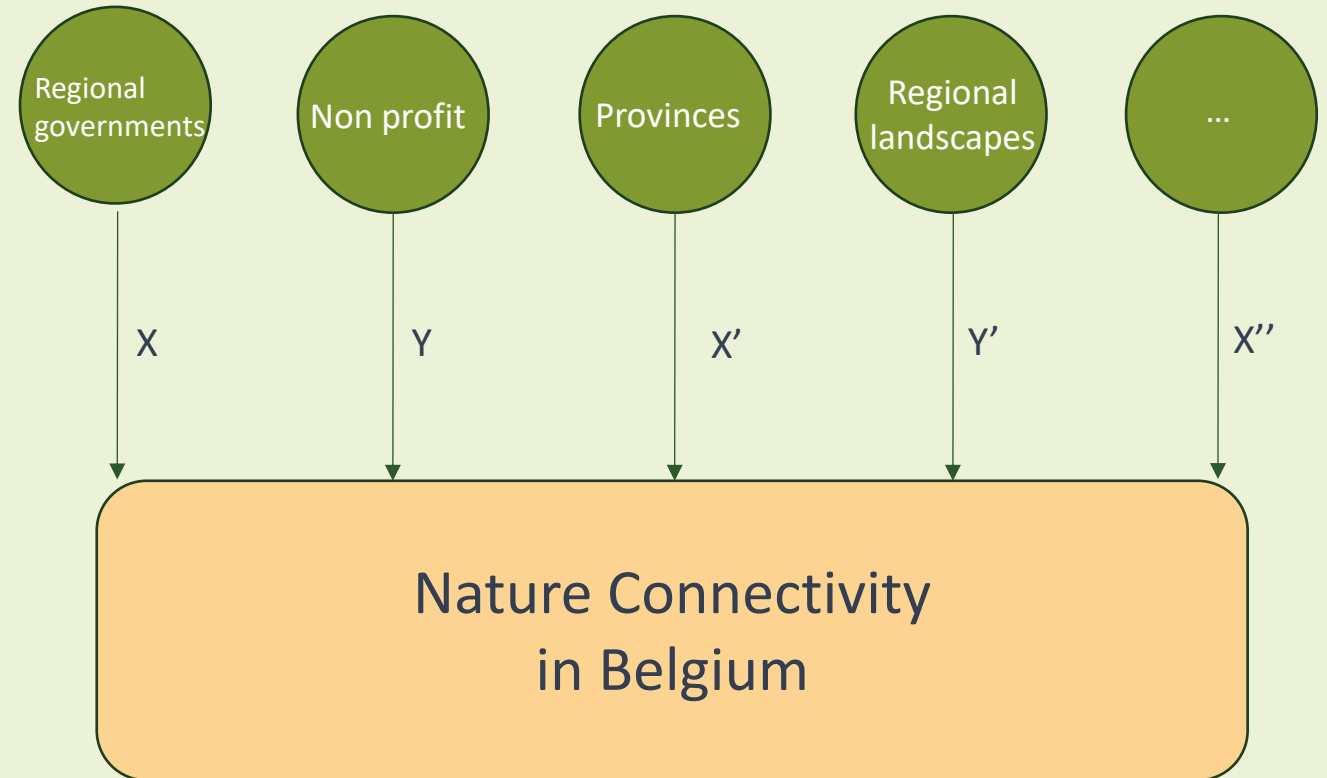


*“If you want to go fast,
go alone. If you want to
go far, go together.”*



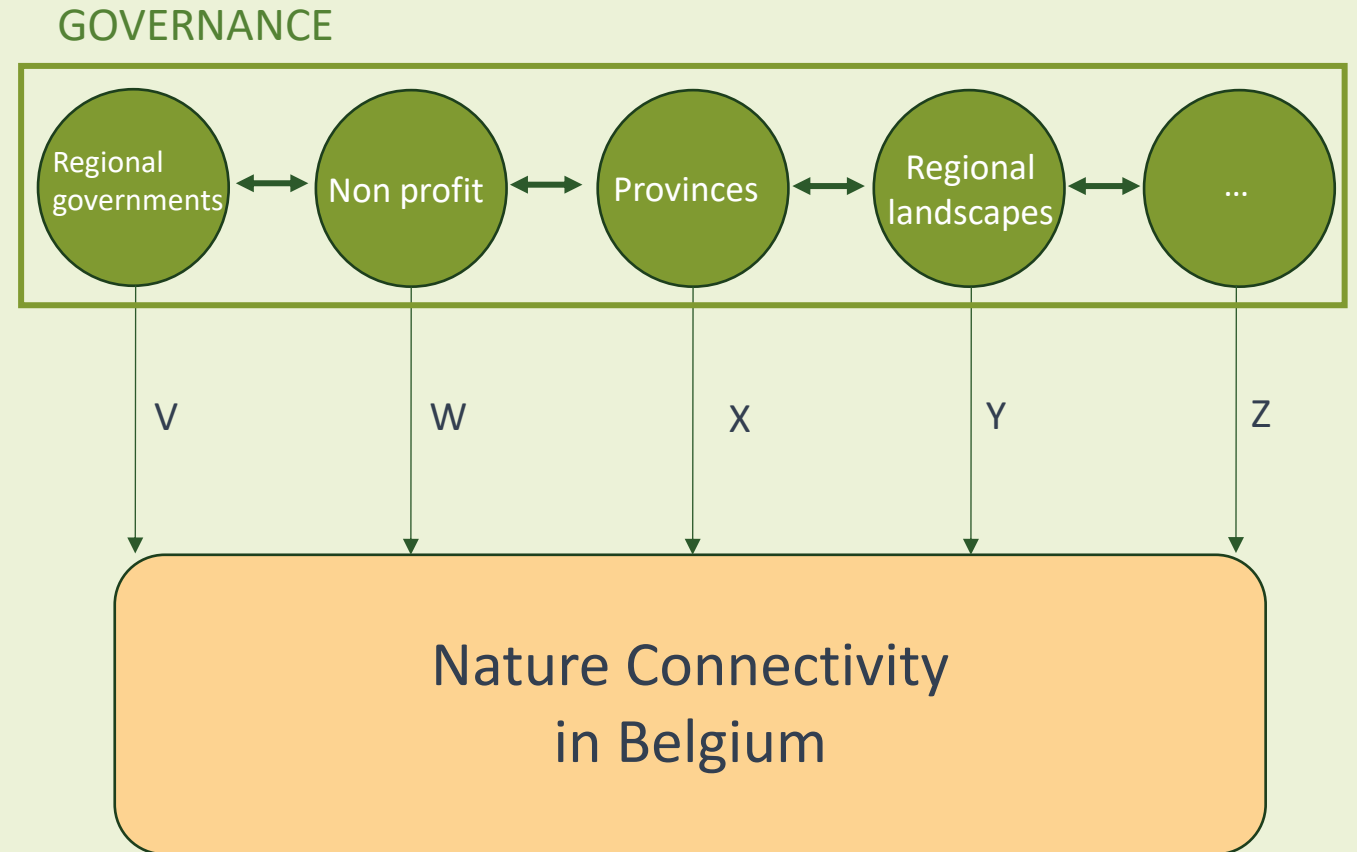
Why governance?

- Currently a lot of different actors around nature connectivity
 - But when efforts are not aligned, they might work against each other
 - Different stakeholders have different goals



Why governance?

- Good governance helps to
 - Align visions
 - Reinforce efforts
 - Work towards a common goal
 - Find better solutions



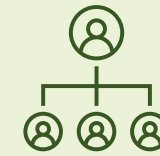
Steps towards governance structure



1. Stakeholder mapping



2. Analyse expectations and abilities

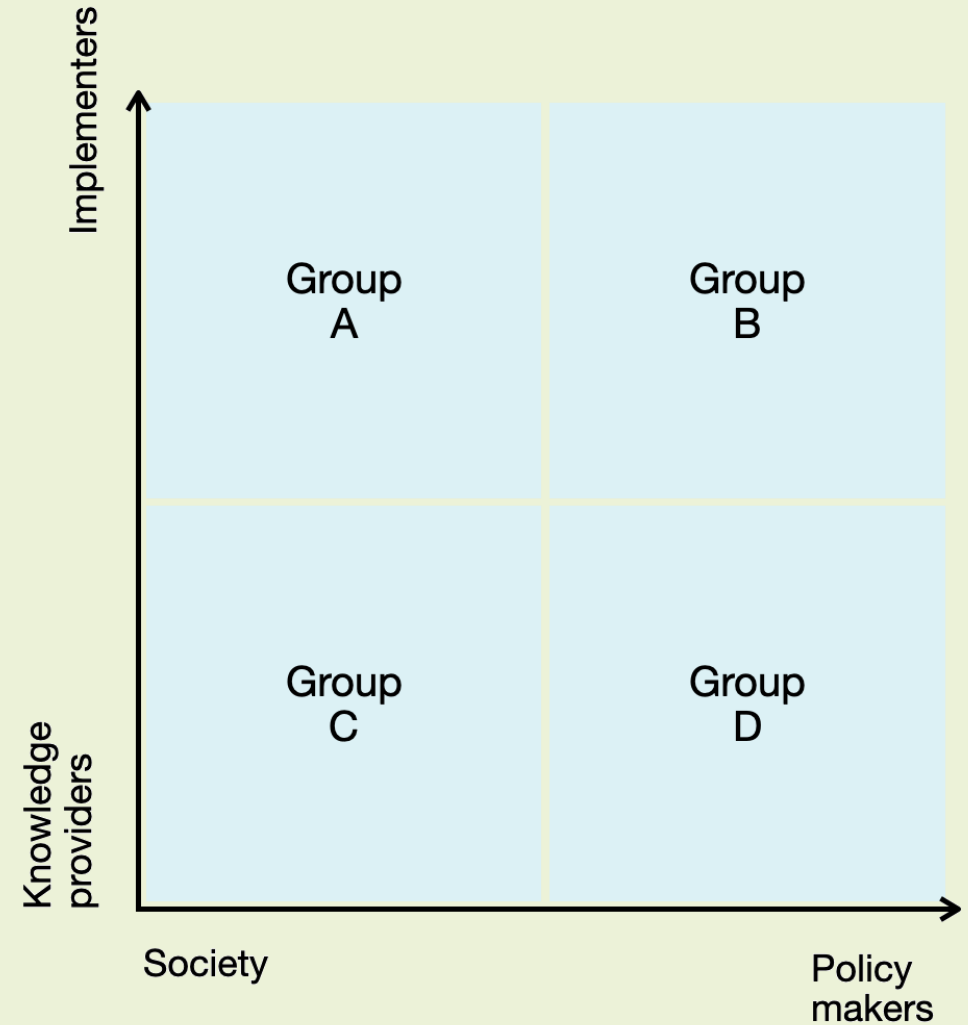


3. Organisational structure



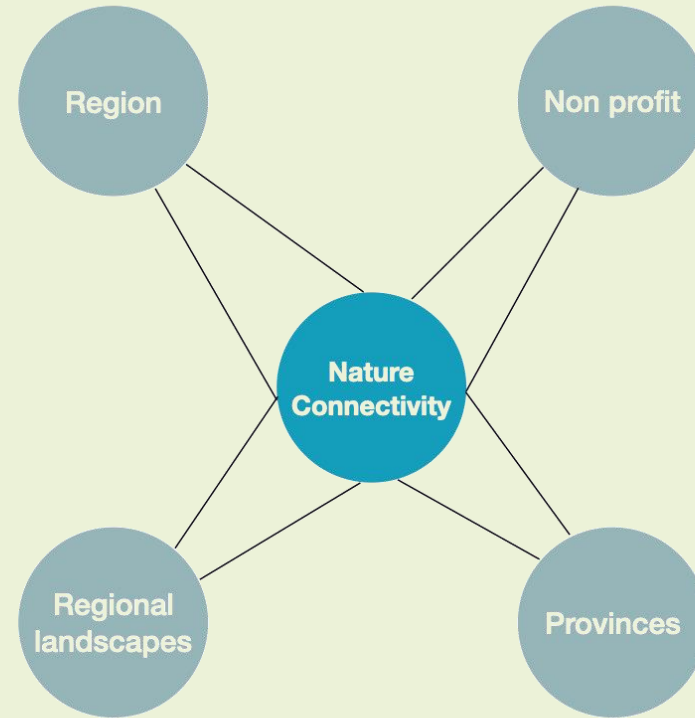
1. Stakeholder mapping:

- Identifying all the stakeholders and analysing how they influence the goal
 - Finding a match in the ambitions
- Finding a structure for each subgroup that matches stakeholders' needs and capabilities
 - Identifying a core team



2. Analyse expectations and abilities

- Who does what? How can the different organisations enhance each other?
- Divide tasks and work towards a common goal.



3 Organisational structure

- Finding a structure that matches stakeholders' needs and capabilities
- That supports partners in their efforts but also stimulates them to reach their goals

TYPE PROGRAMMABUREAUS

Decentraal	Ondersteunend projectbureau	<ul style="list-style-type: none">• Weinig controle over de spelers• Partners worden geconsulteerd• Faciliterende rol als kenniscentrum: voorzien in templates, goede voorbeelden...• Moeilijk iets af te dwingen
	Controlerend projectbureau	<ul style="list-style-type: none">• Matige controle over projectonderdelen• Voorziet ondersteuning en begeleiding bij de projecten: training, uitwerking van instrumenten, handboeken...• Heeft een zekere autoriteit om een manier van werken af te dwingen
Centraal	Directief projectbureau	<ul style="list-style-type: none">• Hoge mate van controle over de projecten• Projectmanagers worden aangeduid door en rapporteren aan het projectbureau• Het projectbureau manageet het project in grote mate zelf, met eigen medewerkers

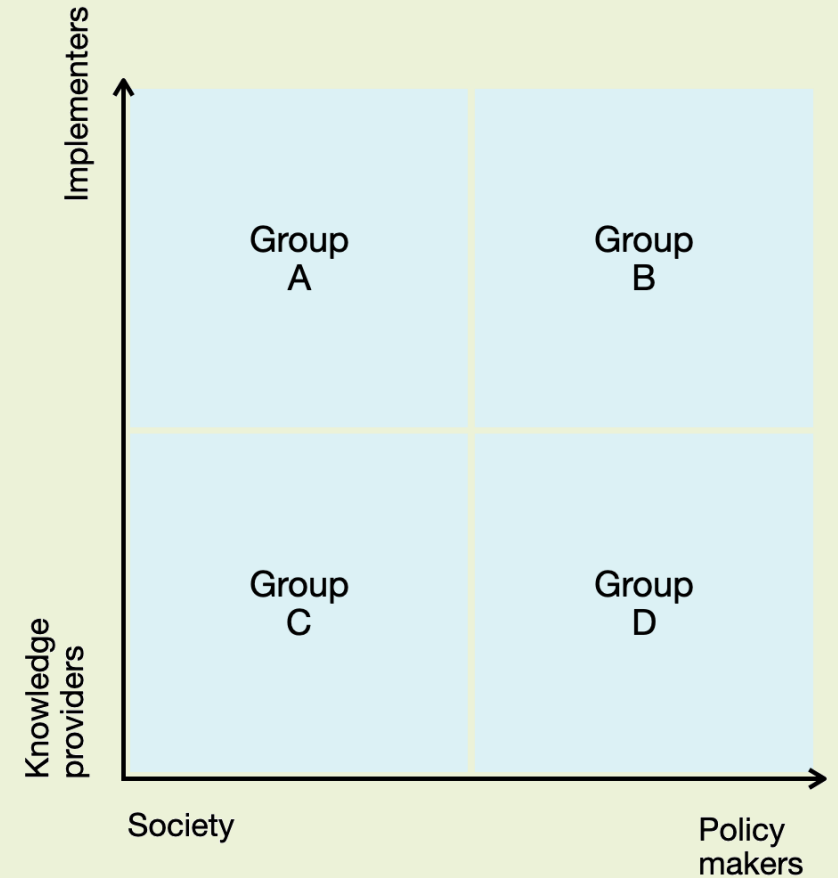


Workshop



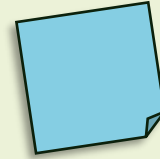
1. Stakeholder mapping

- Nature connectivity in Belgium, who is involved?
 - Write the stakeholders down on post its and stick them in the group where they belong.



2. Intensify

- How will each group cooperate?
 - Which information should be exchanged?
 - What channels do we use to exchange information?
- What timings should we take into account?





Workshop 2: Towards an integrated spatial vision

Nature Connectivity in Belgium



1. Discussion

- Question 1: Is there a need to develop a spatial vision for nature connectivity in Belgium?
 - Arguments in favor
 - Arguments against



1. Discussion

- Question 2: What methodologies and tools are needed?
 - Existing methodologies and tools
 - Methodologies and tools to develop



2. Prioritise

- Allocate a fictional budget



3. Intensify

- What are the next steps?





Workshop 3: Mobilisation of additional resources

Nature Connectivity in Belgium



1. Define

- What are the needs that require extra budget?
 - Divide these needs into 5 categories

People and
tasks

Planning tools

Investments

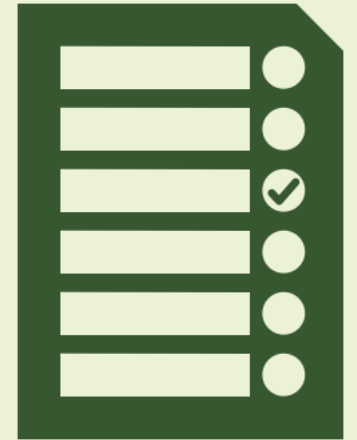
Research and
development

Monitoring
and follow up



2. Prioritise

- Vote for the 3 most needed elements.
 - Everyone gets 3 votes.
- Make a top 5 out of the elected elements.



3. Intensify

- Fill in the chart for each of the elements of the top 5.
 - If needed, extra columns can be added to the chart.

Needs	Sequence	Possible subsidiary	Possible partners to collaborate with	Who's in the lead?

